



WINKLE ELECTRIC COMPANY INC.

July/August 2008

Current EVENTS

In This Issue

Calendar of Events

Featured Products...

- Ferraz-Shawmut Medium Voltage Fuses
- Sola/Hevi-Duty STFE Elite DIN Rail Series
- Hoffman CONCEPT Wall-Mounted Enclosures
- Rockwell Advanced Burner Management
- Rockwell FactoryTalk AssetCentre

2008 Rockwell Automation Fair

Manufacturer Profile: Tyco Electronics

Associate Spotlight: Tom Smith

IN THE NEWS

SOLA/HEVI-DUTY STFE ELITE DIN RAIL SERIES

The Sola/Hevi-Duty STFE Elite DIN Rail Series combines Active Tracking® technology with UL listed surge protection to protect against voltage transients and surges. It continuously tracks the input AC power line, responding instantly upon detection of extraneous high frequency noise and high voltage transients caused by everyday events such as turning on machinery, motors or equipment.



The products are built to meet your unique requirements, and are available in hardwire DIN Rail mount, single phase configuration. They are designed for years of trouble-free operation and require little or no operator intervention after installation.

For additional product details about Sola/Hevi-Duty's new STFE Elite DIN Rail Series, please contact your Winkle Electric sales representative or visit www.winkle.com.

HOFFMAN CONCEPT WALL-MOUNTED ENCLOSURES

CONCEPT enclosures from Hoffman house and protect your sensitive electrical or electronic components from harsh environments. The enclosures can be installed in environments where dirt, dust, oil, water or other contaminants are present. CONCEPT's streamlined styling, flush latches and attractive, durable finish complement other electronic equipment.



Product features include:

- 16 or 14 gauge steel
- Seams are continuously welded and ground smooth
- Minimum-width body flange provides maximum opening
- Body flange trough excludes liquids and contaminants
- Panel mounting studs fit optional panels and accessories
- Mounting holes for direct mounting or external brackets
- Hidden hinges for clean, aesthetic appearance
- Doors are interchangeable and easily removed
- Foam-in-place gasket provides oil-tight and dust-tight seal
- Grounding stud on body
- Provision for thermoplastic data pocket
- Hardware kit with panel mounting nuts, panel grounding hardware and sealing washers for wall mounting holes
- Installation instructions for enclosure and accessories are provided

To learn more about Hoffman, contact your Winkle sales rep.

FEATURED PRODUCTS

ROCKWELL AUTOMATION COMBUSTION CONTROL ADVANCED BURNER MANAGEMENT

Rockwell Automation's advanced burner management systems control and monitor the start up and shut down of burners and ignitors associated with combustion processes. These advanced burner management systems help protect against damage to combustion processes, reduce start-up time and may help you qualify for lower insurance premiums. Rockwell's Burner Management solutions include:

BurnerMaster™

This is a programmable controller-based, burner management system for use with multi-burner combustion processes. It can be designed to accommodate any fuel type and burner firing arrangement. BurnerMaster SB™ is a pre-engineered, programmable controller-based, burner management system for use with single burner combustion processes. Each system is designed with approximately 100 diagnostic and alarm messages to help operators start-up, operate and troubleshoot the combustion process.

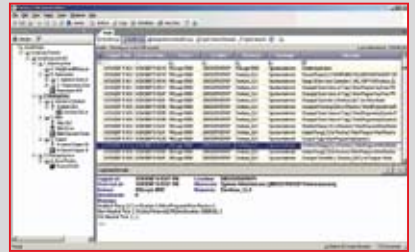
Burner Management System

Rockwell Automation builds burner management systems for multiple burner applications employing many of the Allen-Bradley control and I/O platforms and architectures available today. Rockwell Automation also designs systems to address your specific control philosophies.

For additional information about Advanced Burner Management options available from Rockwell Automation and Winkle Electric, please contact your Winkle sales representative.

ROCKWELL AUTOMATION ASSET MANAGEMENT FACTORYTALK ASSETCENTRE

FactoryTalk AssetCentre provides you with a set of asset-centric focused tools to securely and centrally manage your factory and process automation production environments by securing access to the control system, tracking users' actions, managing asset configuration files, configuring process instruments and providing backup and recovery of operating asset configurations.



The scalable design allows for easy expansion of asset counts and extensive feature sets. It also provides an application adaptable to small line applications or site-wide installations.

To maximize your investment, it is crucial to manage assets effectively. It also means managing change and how it impacts uptime, productivity, quality, employee safety or regulatory compliance. Whatever your area of concern, the flexibility and scalability of FactoryTalk AssetCentre can help you and your organization meet your production goals.

Benefits of FactoryTalk AssetCentre:

- Secure access to the control system
- Prevent unauthorized or unwanted changes from occurring in running processes or files
- Documented audit trail for Rockwell Automation devices of who made changes and when those changes were made to device programs
- Unequivocal record of who made changes to a specific device or file
- Maintain version control for all system files
- Know where to find the most current version of your program
- Confirm that the correct and validated configuration or programming is currently in a device

ASSOCIATE SPOTLIGHT

We would like to recognize Winkle associate Tom Smith for his hard work and dedication. He recently went above and beyond to help a customer and received the following praise.

“Please allow me this opportunity to commend your employee Tom Smith for his outstanding job performance. On the evening of July 3, I contacted Tom at his residence, regarding a part shortage I had. My maintenance crew was scheduled to work on July 5. Without the needed part, production would have been lost for 24 hours. Tom went in to work on the morning of July 4 to check stock. An alternate part was available which Tom delivered to my home. He is an employee that makes things happen! Good customer relations and word of mouth are your best sales tools.”

- Raymond Mitchell, *Extrudex Aluminium, Inc.*

EVENTS CALENDAR

The seminars and training courses detailed below are a great way to learn the latest skills and techniques in the industry. Mark your calendars for these great opportunities!

SFT106 NFPA70E ARC FLASH AWARENESS

The purpose of this course is to provide an overall understanding of the current requirements of NFPA70E-2004. A complete review of the standard will be provided, along with a review of calculation methods and tables used for establishing the ARC Flash Boundary.

September 24, 2008
8:30 a.m. - 4:30 p.m.
Winkle Electric Co. Training Center
Youngstown, Ohio

September 25, 2008
8:30 a.m. - 4:30 p.m.
Winkle Electric Co. Training Center
Erie, Pennsylvania

RE0523 RELIANCE AUTOMAX PROGRAMMING

This course is designed to present the details of AutoMax programming languages. It provides an opportunity to become oriented with and use online and offline AutoMax Executive Screens.

September 30 - October 3, 2008
8:30 a.m. - 4:30 p.m.
Winkle Electric Co. Training Center
Youngstown, Ohio

CCP146 CONTROLLOGIX SYSTEM FUNDAMENTALS

Individuals who have little or no working experience with Logix5000 systems or other programmable controllers should attend this course that teaches the basic skills needed to operate this system.

October 7 - 8, 2008
8:30 a.m. - 4:30 p.m.
Winkle Electric Co. Training Center
Erie, Pennsylvania

CCP51 CONTROLLOGIX LADDER LOGIX

This course is for individuals who are responsible for troubleshooting and maintaining SLC500 systems using RSLogix 500 software. Get hands-on experience in interpreting, isolating and diagnosing hardware problems.

October 9 - 10, 2008
8:30 a.m. - 4:30 p.m.
Winkle Electric Co. Training Center
Erie, Pennsylvania

CCP299 CONTROLLOGIX FUNDAMENTALS & TROUBLESHOOTING

This course will assist those who have no current working experience in Logix5000 systems in developing and building a solid foundation and fundamental knowledge of ControlLogix and other Logix5000 systems.

October 13 - 17, 2008
8:30 a.m. - 4:30 p.m.
Winkle Electric Co. Training Center
Youngstown, Ohio

CCP122 SLC500/PLC5 FUNDAMENTALS

This course paves the way for those individuals who are seeking success with programmable controller systems. Individuals who have little or no working experience should attend this course, which teaches the basics of SLC500 systems and more.

November 5 - 6, 2008
8:30 a.m. - 4:30 p.m.
Winkle Electric Co. Training Center
Erie, Pennsylvania

November 18 - 19, 2008
8:30 a.m. - 4:30 p.m.
Winkle Electric Co. Training Center
Youngstown, Ohio

ROCKWELL AUTOMATION FAIR

November 18 - 20, 2008
Nashville, Tennessee
Winkle Travel Package (*see article at left for additional information*)

CCP164 DEVICENET/RSNETWORK CONFIGURATION AND TROUBLESHOOTING

This course prepares students to successfully design and configure an efficient DeviceNet network using components for the ControlLogix platform. Students will design a cable system and configure a driver, a scanner and network devices.

December 9 - 11, 2008
8:30 a.m. - 4:30 p.m.
Winkle Electric Co. Training Center
Youngstown, Ohio

Register for any of these events by calling Joy Russell (Youngstown) 330-744-5303 or Lois Fetterman (Erie) 814-838-1900.



FERRAZ-SHAWMUT MEDIUM VOLTAGE FUSES

Medium Voltage Fuses by Ferraz-Shawmut provide current-limiting protection for medium voltage transformers and distribution systems, while providing short-circuit protection for medium voltage motors and motor controllers.

Power Fuses

Ferraz-Shawmut acquired General Electric's Power Fuse operations. Since then, all current-limiting power fuses, fuse supports, fuse disconnect switches and spare parts offered by GE are now available at Ferraz-Shawmut.

E-Rated

E-rated fuses are UL listed as general purpose current-limiting fuses and are for use indoors. This allows them to be closely sized to transformer full-load rated current, without being affected by inrush current.

R-Rated

R-rated fuses are current-limiting, high interrupting rating fuses intended for the short-circuit protection of medium voltage motors and motor controllers.

PT Fuses

PT fuses are current-limiting fuses with a high interrupting rating, used for winding protection of potential transformers. They are small dimension, ferrule-type fuses and mounted in standard clips.

Capacitor

Capacitor fuses are current-limiting and operate without noise or discharge. They provide both short circuit and overload protection and are intended to protect against capacitor case rupture or dielectric failure within the capacitor.

TYCO ELECTRONICS RAYCHEM DIVISION

Tyco Electronics Raychem Division is a global manufacturer of products and systems for the electrical power industry, is an operating unit of Tyco Electronics. Their products are extensively employed by power utilities and equipment manufacturers, in rail transport systems and in industries around the world.

Some of the most innovative utilities and industrial companies use Raychem electrical power products. Designed to withstand severe outdoor exposure over long operating lifetimes. They also help maintain service reliability in both overhead and underground installations. Raychem heat-shrinkable materials have been widely used to insulate, seal and mechanically protect power cable since the 1960s. The reliability and simplicity of heat-shrinkable techniques led Raychem engineers, in close cooperation with electrical utilities to develop Raychem products based on these materials.

Tyco Electronics Raychem offers a broad range of products available through Winkle Electric including:

- Low, medium and high voltage cable accessories
- Medium voltage switchgear connection systems
- Nuclear qualified products
- Insulators
- Insulation enhancement
- Low and medium voltage surge arresters
- Components for street lighting
- Casting resins
- Low voltage cable joints
- Electric-installation material

AUTOMATION FAIR

At this year's Rockwell Automation Fair, you will be exposed to information that will help you become a more valuable employee and increase your company's productivity. As in the past, Winkle Electric has put together a travel package including:

- Non-stop flight from Cleveland Hopkins Airport November 18 at 4:45 p.m. for 5:10 p.m. arrival at Nashville International Airport and bus transportation to hotel
- Overnight accommodations at the new Hyatt Place Opryland Hotel on the Gaylord Opryland complex for two nights
- November 19 admission to Automation Fair at the Opryland Convention Center. Hotel transportation to and from the complex throughout the day
- Wednesday evening dinner at the Aquarium Restaurant at the nearby Opry Mills Mall
- November 20 admission to day two of the Automation Fair
- Guests will be able to go to *Honky Tonk Highway* at 1:30 p.m. on Thursday for a variety of music in many venues at no cost
- 5:00 p.m. departure from downtown to the airport for 7:30 p.m. flight, arriving at Cleveland Hopkins Airport at 9:55 p.m.

To make a reservation, call Lois Fetterman or Joy Russell or register at www.winkle.com.