

SYSPEND™ 281-MAX HMI SUSPENSION SYSTEM

PROTECTING YOUR ADVANTAGE



A PENTAIR COMPANY



Get more support for your HMI enclosures with a suspension system built to meet your requirements.

Hoffman's new SYSPEND™ 281-MAX provides heavy-duty HMI suspension up to a maximum load capacity of 281 lbs. With flexible configuration built around a modular design, the 281-MAX provides an aesthetically pleasing solution for use in a wide range of process control applications where an enclosure needs to be ergonomically repositioned for various users or positioned out of the way for cleaning, storage or safety considerations.

Modern modular design and easy installation.

The 281-MAX facilitates user-friendly installation and re-adjustment so the system does not need to be disassembled or calibrated off-site. Simply select from a series of tubes—with multiple lengths available—as well as elbows, adapters and more to build the perfect suspension system for your application. Vertical motion tubes provide versatile, height-adjustable solutions for pedestal mounting.

Modular system for heavyweight HMI suspension up to 281 lbs.

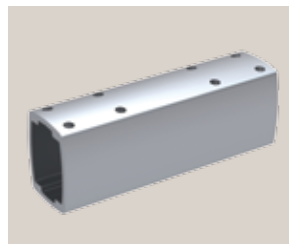


ADVANTAGES AND FEATURES:

- **Supports up to 281 lbs.** and allows operators to easily move controls into and out of position
- **Multiple modular components** for simple, ergonomic operation built to fit any application
- **Height-adjustable** pedestal mounting solution supports up to 77 lbs.
- **Tubes attach with set screws** into recessed mounting areas for improved safety with no additional drilling required
- **User-friendly readjustment** at any time without disassembling the complete system
- **Clean lines and smooth transitions** for attractive aesthetics and ease of cleaning
- **Heavy-duty bearings** in all movable joints provide smooth operation and withstand the stresses of repeated use

Superior HMI support, easy adjustment.

Clean lines, smooth transitions, attractive aesthetics, easy cleaning, improved safety and more. The broad range of tubes and components are engineered to provide ergonomic, fatigue-free operation—in easy to use and visually appealing configurations. Tubing provides structural integrity and acts as a conduit for equipment wiring, further enhancing the refined, modern look. The 281-MAX is compatible with Hoffman's full line of HMI enclosures and maintains the NEMA Type 12 enclosure rating when properly installed.



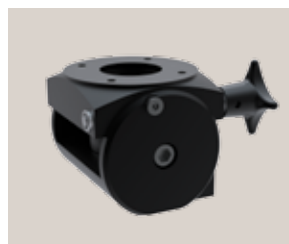
Tubes available in eight lengths



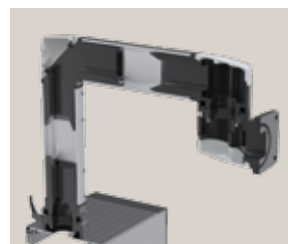
Optional light signal adapter covers



Components provide 300-degree rotation with easy torque adjustment



Optional 30-degree tilt adapter



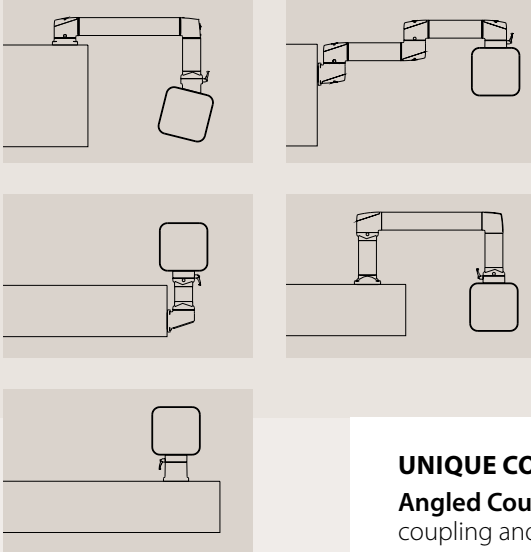
Easily accessible cable pathway



Set screws grab into recessed components

SYSPEND™ 281-MAX HMI SUSPENSION SYSTEM

Limitless configurations are possible. System load capacity varies by configuration. Reference the SYSPEND 281-MAX Specification Sheet for the Load Capacity Graph and configuration suggestions.



A ROBUST SOLUTION FROM THE HMI ENCLOSURE EXPERTS

With 65 years of experience, extensive technical expertise and a vast distribution network, Hoffman is recognized as an industry leader providing a broad range of standard and modified HMI enclosure solutions to customers worldwide. To contact your local Hoffman representative or learn more, visit hoffmanonline.com

PROTECTING YOUR ADVANTAGE



A PENTAIR COMPANY

COMPONENT INFORMATION

Catalog No.	Model	Description	Catalog No.	Model	Description
S2MFC	18798	Flange Coupling	S2MT750	18822	70 x 90 Tube, 750 mm
S2MFEC	18801	Flange Elbow Coupling	S2MT1000	18823	70 x 90 Tube, 1000 mm
S2MSJ	18802	Set-Up Joint	S2MT1250	18824	70 x 90 Tube, 1250 mm
S2MIJ	18803	Intermediate Joint	S2MT1500	18825	70 x 90 Tube, 1500 mm
S2MRB	18804	Rotary Base	S2MT1750	18826	70 x 90 Tube, 1750 mm
S2MWJV	18805	Wall Joint, Vertical	S2MT2000	18827	70 x 90 Tube, 2000 mm
S2MWJH	18806	Wall Joint, Horizontal	S2MRL	18832	Rotation Limiter
S2ME	18807	Elbow	S2M10VP22	18833	1000 mm, 22 lb. (11-22 lbs.)
S2MER	18808	Elbow, Rotatable	S2M10VP37	18834	1000 mm, 37 lb. (22-37 lbs.)
S2MWF	18811	Wall Flange	S2M10VP57	18835	1000 mm, 57 lb. (37-57 lbs.)
S2MAA	18812	Angle Adaptor, Stepless 30°	S2M10VP77	18836	1000 mm, 77 lb. (57-77 lbs.)
S2MACB	18813	Angled Coupling, Tilted Back	S2MLSAR	18837	Light Signal Adptr, Round Cvr
S2MACF	18814	Angled Coupling, Tilt Forward	S2MLSAE	18838	Light Signal Adptr, Elbow Cvr
S2MBC	18815	Base Coupling	S2MTA	18841	Tube Adapter
S2MFC48	18816	Flange Coupling, 48 mm Rd Tube	S2MPBS	18842	Pedestal Base, Small
S2MPBL	18817	Pedestal Base, Large	S2MTHP	18843	Tube Hole Plugs, 50 pcs
S2MT250	18818	70 x 90 Tube, 250 mm	S2MA48	19226	Adapter, 48 mm Round Tube
S2MT500	18821	70 x 90 Tube, 500 mm			

UNIQUE CONFIGURATION OPTIONS:

Angled Couplings eliminate the need to order coupling and angle adaptor

Base Coupling allows enclosure to be mounted to surface without the tubes

Rotatable Elbow for rotation at the elbow joint

Vertical Motion Pedestal with 48-mm round tube facilitates pedestal height adjustment by operator

Light Signal Adapters allow signal lights to be mounted to elbows and joints

Rotary Base for tube rotation at the base

Vertical Wall Joint allows a tube to run vertically coming out of the wall

More tube lengths available to reduce the need to custom cut tubes

CONSTRUCTION:

- Silver anodized aluminum tubes offered in eight lengths ranging from 250 to 2000 mm
- Black die cast aluminum components
- Set screws coated with Loctite™ to seal threaded holes
- Gray composite cable access covers
- Oil-resistant neoprene gaskets

INDUSTRY STANDARDS:

Maintains NEMA Type 12 and IEC IP55 enclosure ratings

INSTALLATION/MOUNTING:

Reference SYSPEND 281-MAX Specification Sheet for configuration options and load capacity graph

Primary Global Locations

Brazil

Pentair Technical Products Brazil
(Taurus Metalurgica LTDA)
Rua Joao Marcon, 165
18550.000 – Centro
Boituva – SP

Canada

Hoffman Enclosures Inc.
111 Grangeway Avenue, Suite 504
Scarborough, Ontario M1H 3E9
Tel: 416-289-2770
Fax: 416-289-2883
1-800-668-2500 (Canada only)

China

Pentair Technical Products
China Manufacturing Headquarters
Air Port Industrial Zone
ShuangYuan Road West
ChengYang City, Qingdao PC 266108

Pentair Technical Products
China Sales Headquarters
21st Floor of Cloud Nine Plaza
No. 1118 West Yan'an Road
Changning District, Shanghai
P.R. China

Europe

Pentair Technical Products Europe
Langenalber Straße 96-100
75334 Straubenhardt, Germany

Pentair Technical Products Poland Sp. z o.o.
Manufacturing Location
ul. Strefowa 10
PL 58-200 Dzierzoniów

India

Pentair Technical Products India Pvt. Ltd.
Unit 1, Shed 2
(Sai Lakshmi Industrial Campus)
Kannamangala, Bidarahalli Hobli
Whitefield – Hoskote Road
Bangalore – 560067

Mexico

Hoffman Enclosures Mexico,
S. de R. L. de C.V.
Arquimedes No. 33, Piso 1
Col. Palmas Polanco
Mexico, DF CP 11560
Tel: (55) 5280-1596
Fax: (55) 5280-8827 / 5280-8167

For worldwide locations, see hoffmanonline.com

USA – Global Headquarters

2100 Hoffman Way
Anoka, Minnesota 55303-1745 U.S.A.
Tel: 763-421-2240
Fax: 763-422-2600
Customer Service: 763-422-2211